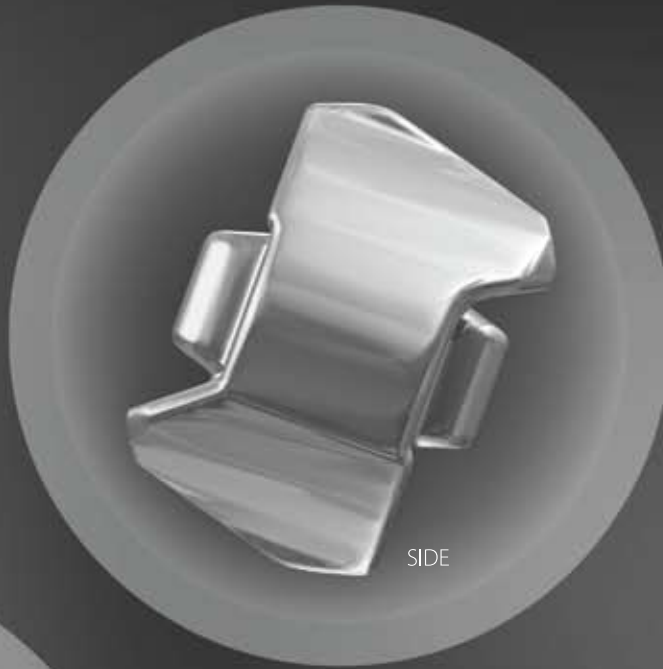
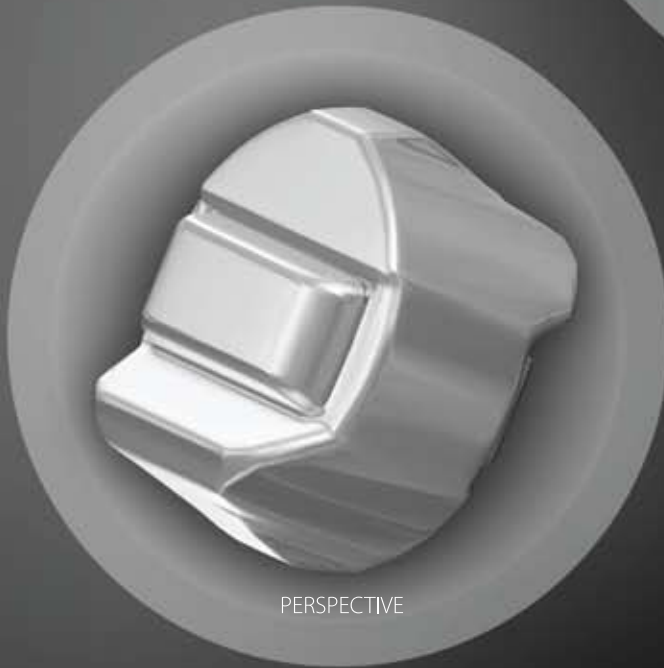




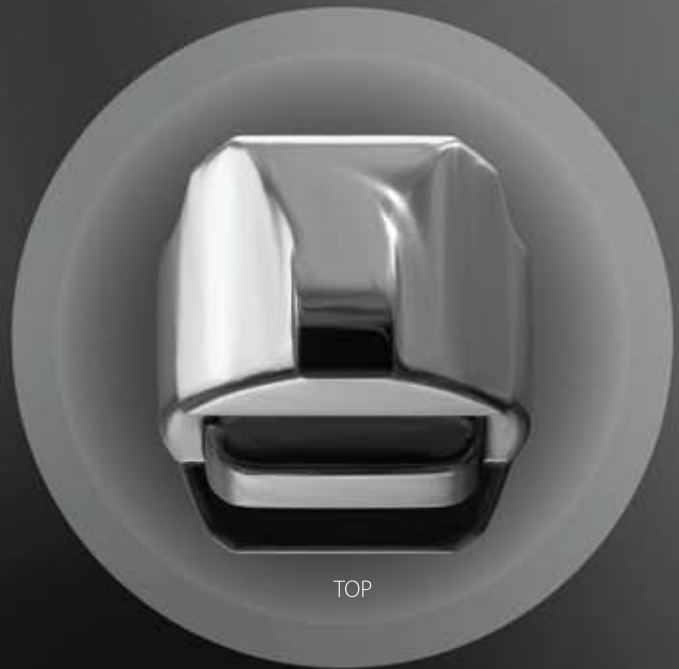
FRONT



SIDE



PERSPECTIVE



TOP

## FACTS

**FACTORY FINISH:** 1500-Grit Polished

**TRACK FLARE POTENTIAL:** 7"+

**LANE CONDITION:** Medium - Heavy Oil

**COVERSTOCK:** Cytoplasmic XL™ Pearl Reactive

**WEIGHT BLOCK:** Nucleus II™ Core 14 - 16 lbs.  
Modified Nucleus™ Core 12-13 lbs.

**COLOR:** Aqua/Copper/Purple

**D-SCALE:** 73 - 75

**AVAILABLE WEIGHTS:** 12 - 16 lbs.

**SKU:** BBMRPM

LBS.	RG	RG DIFF.	INTER. DIFF.
16 lb.	2.52	.048	.022
15 lb.	2.54	.047	.021
14 lb.	2.57	.040	.020
13 lb.	2.64	.035	.014
12 lb.	2.67	.027	.009



ROTO GRIP, INC.  
165 SOUTH 800 WEST  
BRIGHAM CITY, UT 84302

1.888.450.6920 • [ROTOGRIP.COM](http://ROTOGRIP.COM)

